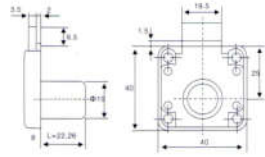




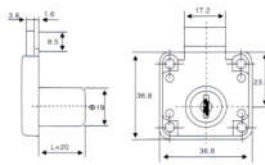
Model: 138-22

Name: Drawer Lock
 Size: D19xL22 D19xL26
 Finish: Chrome\Black\Gold
 Material: Zinc



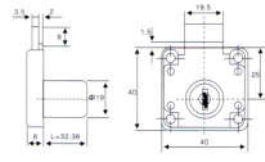
Model: 138-16

Name: Drawer Lock
 Size: D19xL22 D19xL26
 Finish: Chrome\Black\Gold
 Material: Zinc



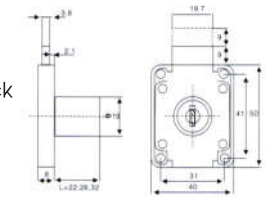
Model: 138-32

Name: Drawer Lock
 Size: D19xL22 D19xL26
 Finish: Chrome\Black\Gold
 Material: Zinc



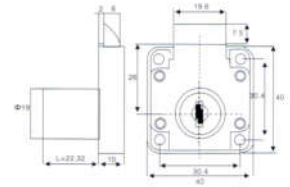
Model: 238

Name: Two-time swivel drawer lock
 Size: D19xL22 D19xL26 D19xL32
 Finish: Chrome\Black\Gold
 Material: Zinc



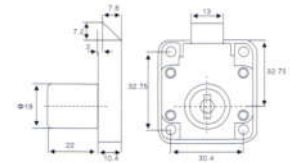
Model: 338

Name: Automatic drawer Lock
 Size: D19xL32 D19xL38
 Finish: Chrome\Black\Gold
 Material: Zinc



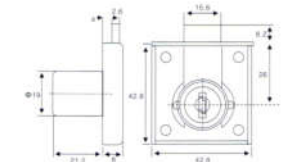
Model: 502

Name: Automatic drawer Lock
 Size: D19xL32 D19xL38
 Finish: Chrome\Black\Gold
 Material: Zinc



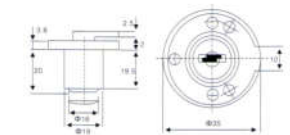
Model: 101

Name: Drawer Lock
 Size: D19xL32
 Finish: Chrome\Black\Gold
 Material: Zinc



Model: 587

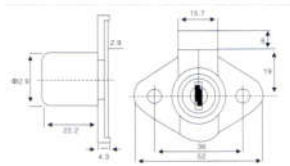
Name: Cabinet lock
 Size: D19xL22
 Finish: Chrome\Black\Gold
 Material: Zinc





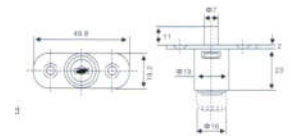
Model: 801

Name: Drawer Lock
 Size: D19xL22
 Finish: Chrome\Black\Gold
 Material: Zinc



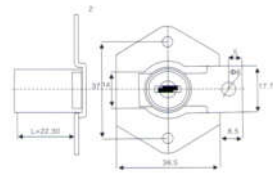
Model: 801

Name: Drawer Lock
 Size: D19xL22
 Finish: Chrome\Black\Gold
 Material: Zinc



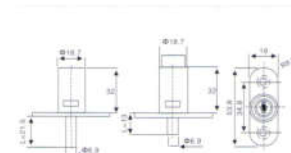
Model: 801-16

Name: Drawer Lock
 Size: D16xL22 D16xL30
 Finish: Chrome\Black\Gold
 Material: Zinc



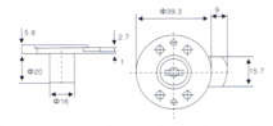
Model: 801-16

Name: Drawer Lock
 Size: D16xL22 D16xL30
 Finish: Chrome\Black\Gold
 Material: Zinc



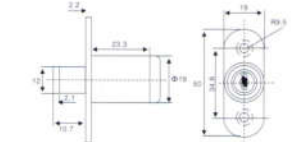
Model: 109

Name: Cabinet lock
 Size: D19xL20 D19xL22
 Finish: Chrome\Black\Gold
 Material: Zinc



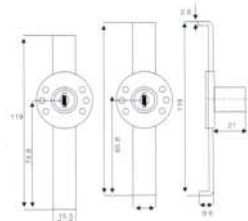
Model: 109

Name: Cabinet lock
 Size: D19xL20 D19xL22
 Finish: Chrome\Black\Gold
 Material: Zinc



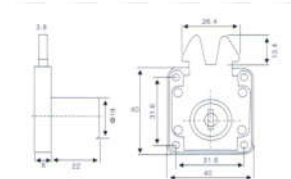
Model: 109-L

Name: Cabinet lock
 Size: D16xL22 D19xL20
 Finish: Chrome\Black\Gold
 Material: Zinc



Model: 109-L

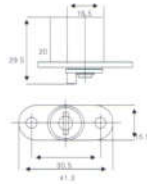
Name: Cabinet lock
 Size: D16xL22 D19xL20
 Finish: Chrome\Black\Gold
 Material: Zinc





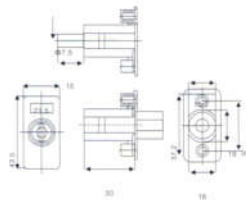
Model: 203

Name: Drawer Lock
 Size: D16.5xL30
 Finish: Chrome\Black\Gold
 Material: Zinc



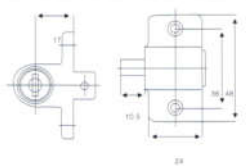
Model: 205

Name: Drawer Lock
 Size: D16.5xL30
 Finish: Chrome\Black\Gold
 Material: Zinc



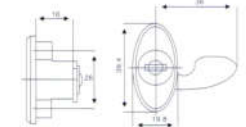
Model: 206

Name: Cabinet lock
 Size: D18xL20
 Finish: Chrome\Black\Gold
 Material: Zinc-Alloy



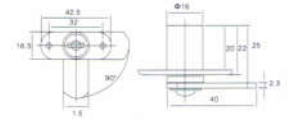
Model: 207

Name: Cabinet lock
 Size: D16.5xL30
 Finish: Chrome\Black\Gold
 Material: Zinc



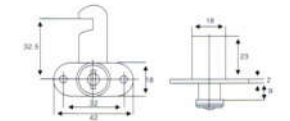
Model: 208

Name: Cabinet lock for two door
 Size: D16xL20 D19xL20
 Finish: Chrome\Black\Gold
 Material: Zinc



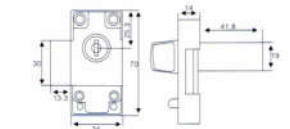
Model: 209

Name: Cabinet lock for two door
 Size: D18xL20
 Finish: Chrome\Black\Gold
 Material: Zinc



Model: 339

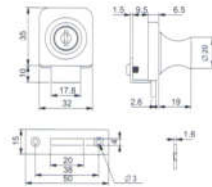
Name: Cabinet lock for two door
 Size: D16xL20 D19xL20
 Finish: Chrome\Black\Gold
 Material: Zinc





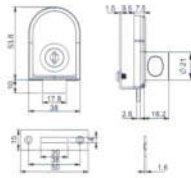
Model: 407

Name: Drawer Lock
 Size: D19xL22
 Finish: Chrome\Black\Gold
 Material: Zinc



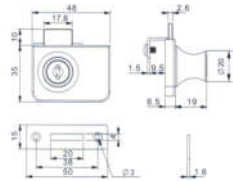
Model: 408

Name: Drawer Lock
 Size: D16xL22 D16xL30
 Finish: Chrome\Black\Gold
 Material: Zinc



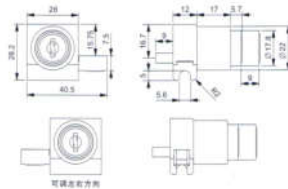
Model: 417

Name: Cabinet lock
 Size: D19xL20 D19xL22
 Finish: Chrome\Black\Gold
 Material: Zinc



Model: 308

Name: Cabinet lock
 Size: D16xL22 D19xL20
 Finish: Chrome\Black\Gold
 Material: Zinc



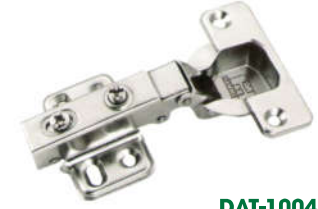
Automatic closing (Buffering oil equipment)
 Opening at 90°
 Diameter hinge cup: 35mm
 Door (c) dimension: 3-7mm
 Door (c) tickness: 14-21mm
 Optional installation of hinge cup Distance (45\48\52)mm



Automatic closing (Buffering oil equipment)
 Opening at 95°
 Diameter hinge cup: 35mm
 Door (c) dimension: 3-7mm
 Door (c) tickness: 14-21mm
 Optional installation of hinge cup Distance (45\48\52)mm



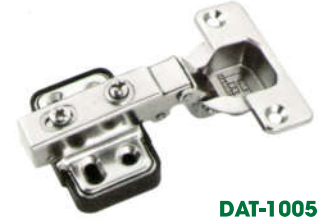
DAT-1001



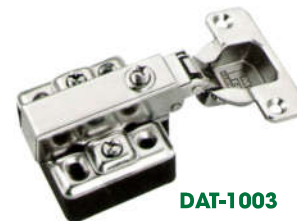
DAT-1004



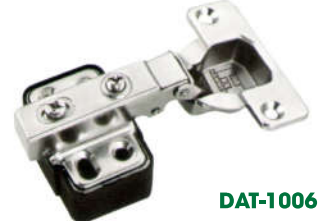
DAT-1002



DAT-1005



DAT-1003



DAT-1006



Automatic closing (Buffering oil equipment)
Opening at 95°
Diameter hinge cup: 35mm
Door (c) dimension: 3-7mm
Door (c) tickness: 14-21mm
Optional installation of hinge cup Distance (45\48\52)mm



Automatic closing (Buffering oil equipment)
Opening at 95°
Diameter hinge cup: 35mm
Door (c) dimension: 3-7mm
Door (c) tickness: 14-21mm
Optional installation of hinge cup Distance (45\48\52)mm



DAT-1007



DAT-1010



DAT-1008



DAT-1011



DAT-1009



DAT-1012



Automatic closing (Buffering oil equipment)
Opening at 95°
Diameter hinge cup: 35mm
Door (c) dimension: 3-7mm
Door (c) tickness: 14-21mm
Optional installation of hinge cup Distance (45\48\52)mm



Automatic closing (Buffering oil equipment)
Opening at 95°
Diameter hinge cup: 35mm
Door (c) dimension: 3-7mm
Door (c) tickness: 14-21mm
Optional installation of hinge cup Distance (45\48\52)mm



DAT-1013



DAT-1016



DAT-1014



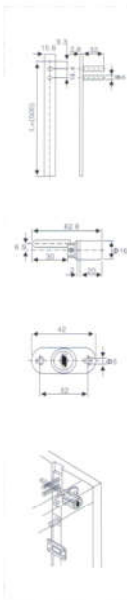
DAT-1017



DAT-1015



DAT-1018



DAT:288-16

Name: 3-unit front drawer lock
 Size: D16xL20
 Finish: Chrome/Gold
 Material: Zinc

DAT:288-16

Name: 3-unit front drawer lock
 Size: D16xL20
 Finish: Chrome/Gold
 Material: Zinc



DAT:8525

Name: U-PVC Casement lock
 Finish: Powder coating
 Material: Aluminium Alloy, Carbon steel



DAT:8530

Name: U-PVC Casement door
 Finish: Powder coating
 Material: Aluminium Alloy, Carbon steel



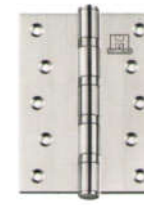
DAT: 2001

Size: 5x3x3mm,4BB



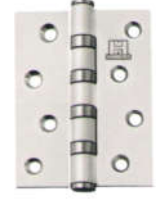
DAT: 2002

Size: 5x3x2,5mm,4BB



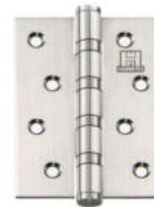
DAT: 2003

Size: 5x3x2,5mm,4BB



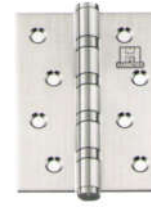
DAT: 2004

Size: 4x3x3/2,5mm,4BB



DAT: 2005

Size: 4x3x3mm,4BB



DAT: 2006

Size: 4x3x2,5mm,2BB



DAT: 2007

Size: 4x3x2mm,2BB



DAT: 2008

Size: 4x3x2mm,2BB



DAT: 2009

Size: 3,5x4x2,5/3mm,1BB



DAT: 2010

Size: 3,5x4x2,5/3mm,1BB



DAT: 2011

Size: 3x2,5/3mm,1BB



DAT: 2012

Size: 3x2,5/3mm,1BB



DAT: 2013

Size: 5x4x3/2,5mm,2BB



DAT: 2014

Size: 4x4x3mm,2BB



DAT: 2015

Size: 4x4x2,5mm,2BB



DAT: 2016

Size: 4x4x2mm,2BB

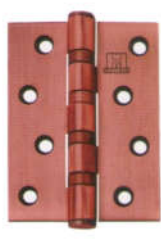
📌 CỬA TỬ - CỬA GỖ



DAT: 2017
Size: 5x3x3/2,5mm,4BB



DAT: 2017
Size: 5x3x3/2,5mm,4BB



DAT: 2017
Size: 5x3x3/2,5mm,4BB



DAT: 2017
Size: 4x3,0mm



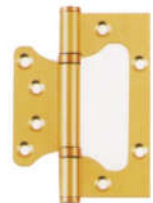
DAT: 2017
Size: 4x3x3/2,5mm,2BB



DAT: 2017
Size: 4x3x3/2,5mm,2BB



DAT: 2017
Size: 4x3x3/2,5mm,2BB



DAT: 2017
Size: 4x3x3/2,5mm,2BB



DAT: 2017
Size: 4'x3,0mm



DAT: 2017
Size: 4'



DAT: 2017
Size: 5'



DAT: 2017
Size: 6'



DAT: 2017
Size: 5'x3,5x3mmxΦ15



DAT: 2017
Size: 5'x3,5x3mmxΦ16



DAT: 2017
Size: 5'x4x3mmxΦ18



DAT: 2017
Size: 4'x2,6x2,5mmxΦ18

📌 CỬA TỬ - CỬA GỖ



DAT: 3025



DAT: 3026



DAT: 3027



DAT: 3028



DAT: 3029



DAT: 3030



DAT: 3031



DAT: 3032



DAT: 3033



DAT: 3034



DAT: 3035



DAT: 3036



DAT: 3037



DAT: 3038



DAT: 3039



DAT: 3040



DAT: 3041



DAT: 3042



DAT: 3043



DAT: 3044



DAT: 3045



DAT: 3046



DAT: 3047

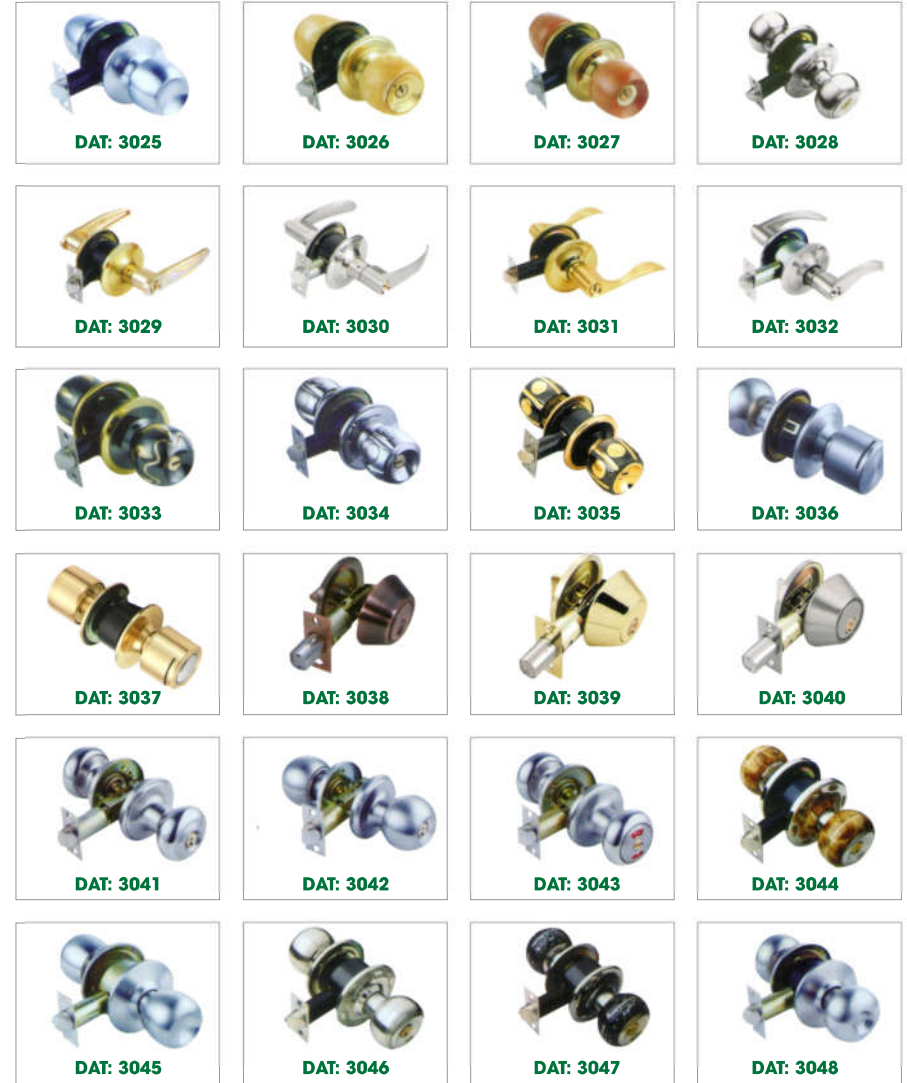


DAT: 3048

🏠 CỬA TỬ - CỬA GỖ



🏠 CỬA TỬ - CỬA GỖ







DAT-6001



DAT-6002



DAT-6003



DAT-6004



DAT-6005



DAT-6006



DAT-600

PNEUMATIC SUPPORT SERIES

Use: upward Pneumatic support
 Force Specifications: 50N, 60N, 80N, 100N, 120N, 150N
 Applicable scope suitable for up wooden door and duminum frame-door. (Different specsare suitable for door of different weights).
 Pneumatic support can be purchase or custobuilt for proper strenght based on weightof door panel. The color can be customized according to the customer demand.



DAT-5001

Note: last can go together with eminate a rubber turn



Lower wheel of cabinet door: Adopting high - middle - low level bearing to slip, configured in high- grade nylon plastics of 100% Oriented by the outer lated experienced accurated lathe-running make the pulley reaching in roundness, smoothness unhindered and ultra silencing.



DAT-5003

Note: last can go together with eminate a rubber turn



Lower wheel of cabinet door: Adopting high - middle - low level bearing to slip, configured in high- grade nylon plastics of 100% Oriented by the outer lated experienced accurated lathe-running make the pulley reaching in roundness, smoothness unhindered and ultra silencing.



DAT-5005

Note: last can go together with eminate a rubber turn



Lower wheel of cabinet door: Adopting high - middle - low level bearing to slip, configured in high- grade nylon plastics of 100% Oriented by the outer lated experienced accurated lathe-running make the pulley reaching in roundness, smoothness unhindered and ultra silencing.



DAT-5007

Note: last can go together with eminate a rubber turn



Lower wheel of cabinet door: Adopting high - middle - low level bearing to slip, configured in high- grade nylon plastics of 100% Oriented by the outer lated experienced accurated lathe-running make the pulley reaching in roundness, smoothness unhindered and ultra silencing.



DAT-5002

Note: last can go together with eminate a rubber turn



Lower wheel of cabinet door: Adopting high - middle - low level bearing to slip, configured in high- grade nylon plastics of 100% Oriented by the outer lated experienced accurated lathe-running make the pulley reaching in roundness, smoothness unhindered and ultra silencing.



DAT-5004

Note: last can go together with eminate a rubber turn



Lower wheel of cabinet door: Adopting high - middle - low level bearing to slip, configured in high- grade nylon plastics of 100% Oriented by the outer lated experienced accurated lathe-running make the pulley reaching in roundness, smoothness unhindered and ultra silencing.



DAT-5006

Note: last can go together with eminate a rubber turn



Lower wheel of cabinet door: Adopting high - middle - low level bearing to slip, configured in high- grade nylon plastics of 100% Oriented by the outer lated experienced accurated lathe-running make the pulley reaching in roundness, smoothness unhindered and ultra silencing.



DAT-5008

Note: last can go together with eminate a rubber turn



Lower wheel of cabinet door: Adopting high - middle - low level bearing to slip, configured in high- grade nylon plastics of 100% Oriented by the outer lated experienced accurated lathe-running make the pulley reaching in roundness, smoothness unhindered and ultra silencing.



DAT-6016



DAT-6017



DAT-6018



DAT-6019



DAT-6020



DAT-6021



DAT-6022



DAT-6023



DAT-6024



DAT-6025



DAT-6026



DAT-6027



DAT-6028



DAT-6029



DAT-6030



DAT-6008



DAT-6009



DAT-6010



DAT-6011



DAT-6012



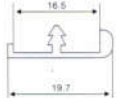
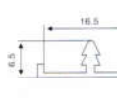
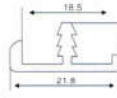
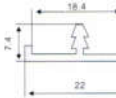
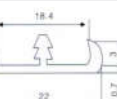
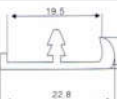
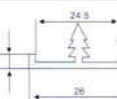
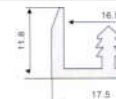
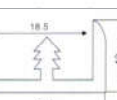
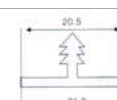
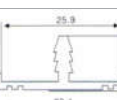
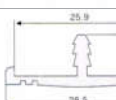
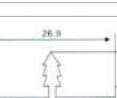
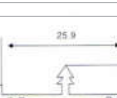
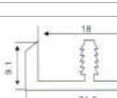
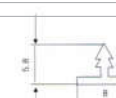
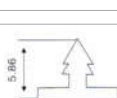
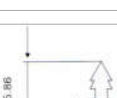
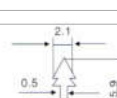
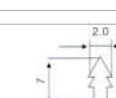


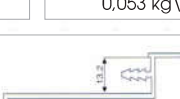
DAT-6013



DAT-6014



DAT-6015

 <p>DAT-8001 0,8kg\m</p>	 <p>DAT-8002 0,006kg\m</p>	 <p>DAT-8003 0,11; 0,13; 0,145 kg\m</p>	 <p>DAT-8004 0,045; 0,075; 0,06 kg\m</p>
 <p>DAT-8005 0,05; 0,11kg\m</p>	 <p>DAT-8006 0,5; 0,8; 0,11 kg\m</p>	 <p>DAT-8007 0,11; 0,13 kg\m</p>	 <p>DAT-8008 0,11kg\m</p>
 <p>DAT-8009 0,18kg\m</p>	 <p>DAT-8010 0,13kg\m</p>	 <p>DAT-8011 0,177kg\m</p>	 <p>DAT-8012 0,12; 0,144 kg\m</p>
 <p>DAT-8013 0,11; 0,13 kg\m</p>	 <p>DAT-8014 0,065; 0,096 kg\m</p>	 <p>DAT-8015 0,15; 0,18 kg\m</p>	 <p>DAT-8016 0,016; 0,027; 0,03 kg\m</p>
 <p>DAT-8017 0,016; 0,027 kg\m 0,023; 0,038 kg\m</p>	 <p>DAT-8018 0,025; 0,03 kg\m</p>	 <p>DAT-8019 0,016; 0,022 kg\m 0,027 kg\m</p>	 <p>DAT-8020 0,027; 0,045 kg\m 0,053 kg\m</p>
 <p>DAT-8021 0,029; 0,31; 0,37; 0,47kg\m</p>	 <p>DAT-8022 0,59kg\m</p>	 <p>DAT-8023 0,56kg\m</p>	



DAT-7001
Width: 40mm
Length: 10" - 24" (inch)
Thickness: 0,8x0,8x0,8mm
1,0x1,0x1,0mm
Colour: Zinc.black,color zinc



DAT-7002
Width: 42mm
Length: 10" - 24" (inch)
Thickness: 0,9x0,9x0,9mm
1,0x1,0x1,0mm
Colour: Zinc.black,color zinc



DAT-7003
Width: 45mm
Length: 10" - 24" (inch)
Thickness: 1,2x1,2x1,2mm
1,2x1,0x1,2mm
1,0x1,0x1,0mm
Colour: Zinc.black,color zinc

