

**A002
Standard Application**



002-1-2



002-2-2



002-3-2



002-4-2



002-5-2



002-6-2



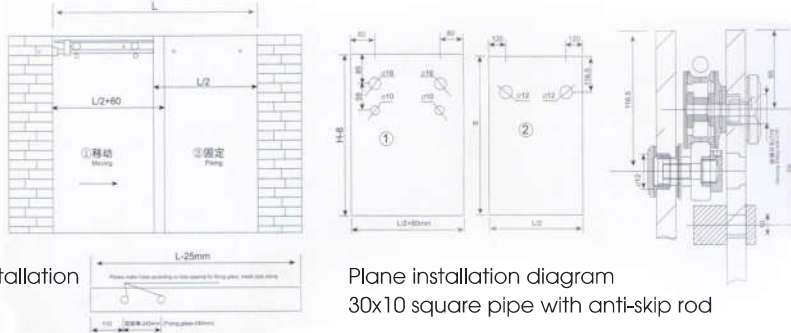
002-7-2



002-8-2

Nonstandard shower room installation diagram Instructions:

- 1) Maximum weight wearing of the shower room: 65KG
- 2) 180° maximum installation length is 1.8m; 90° dual - open door maximum installation length is 1.0m
- 3) There are no drilled holes in the guide rails ordered by users. Holes shall be made during installation.
- 4) The accessories are only suitable for clamping 8mm - 10mm glass dimensions in the installation diagram.
- 5) When drilling holes in glass, please do strictly in accordance with dimensions in the installation diagram.
- 6) Every type can install 90° dual - open, 90° single - open and 180°



**A003
Standard Application**



003-1-2



003-2-2



003-3-2



003-5-2



003-6-2



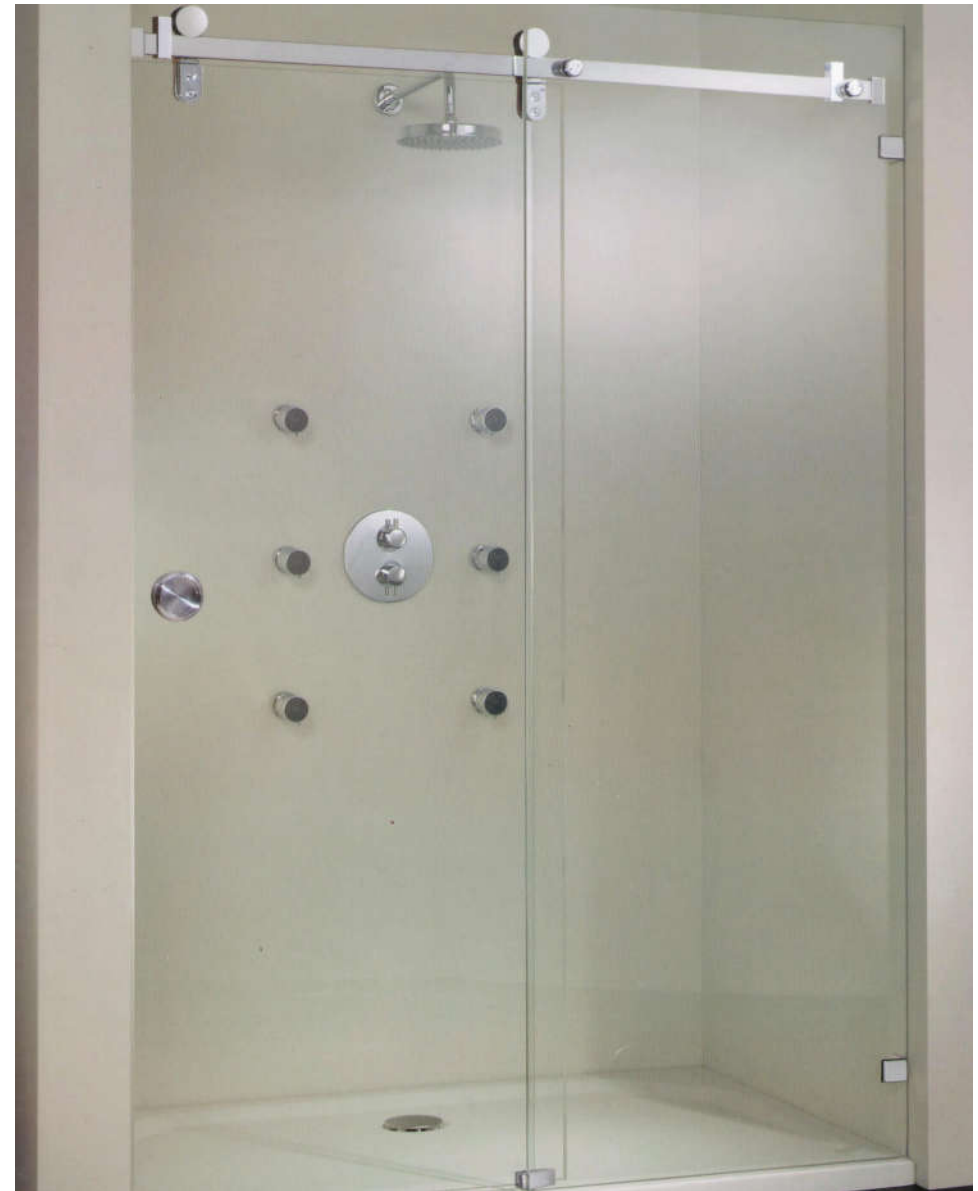
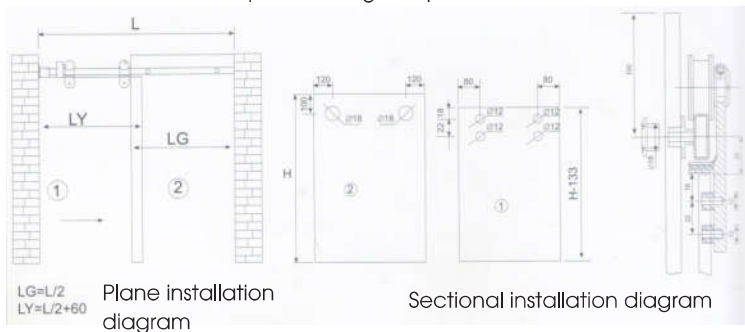
003-7-2



003-8-2

Nonstandard shower room installation diagram Instructions:

- 1) Maximum weight wearing of the shower room: 65KG
- 2) 180° maximum installation length is 1.8m; 90° dual - open door maximum installation length is 1.0m
- 3) There are no drilled holes in the guide rails ordered by users. Holes shall be made during installation.
- 4) The accessories are only suitable for clamping 8mm - 10mm glass dimensions in the installation diagram.
- 5) When drilling holes in glass, please do strictly in accordance with dimensions in the installation diagram.
- 6) Every type can install 90° dual - open, 90° single - open and 180°



**A008
Standard Application**



008-1-2



008-2-2



008-3-2



008-3-2



008-5-1



008-6-1



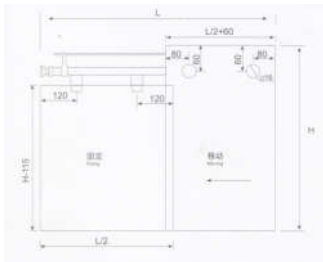
008-7-1 ϕ 19



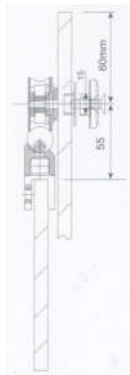
008-8-1 ϕ 8

Nonstandard shower room installation diagram Instructions:

- 1) Maximum weight wearing of the shower room: 65KG
- 2) 180° maximum installation length is 1.8m; 90° dual - open door maximum installation length is 1.0m
- 3) There are no drilled holes in the guide rails ordered by users. Holes shall be made during installation.
- 4) The accessories are only suitable for clamping 8mm - 10mm glass dimensions in the installation diagram.
- 5) When drilling holes in glass, please do strictly in accordance with dimensions in the installation diagram.
- 6) Every type can install 90° dual - open, 90° single - open and 180°



Plane installation diagram



Sectional installation diagram

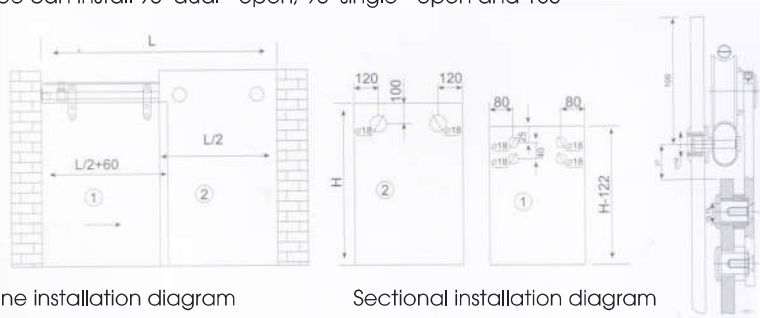


**A010
Standard Application**



Nonstandard shower room installation diagram Instructions:

- 1) Maximum weight wearing of the shower room: 65KG
- 2) 180° maximum installation length is 1.8m; 90° dual - open door maximum installation length is 1.0m
- 3) There are no drilled holes in the guide rails ordered by users. Holes shall be made during installation.
- 4) The accessories are only suitable for clamping 8mm - 10mm glass dimensions in the installation diagram.
- 5) When drilling holes in glass, please do strictly in accordance with dimensions in the installation diagram.
- 6) Every type can install 90° dual - open, 90° single - open and 180°



A015
Standard Application



015-1-2



015-2-4



015-3-1



015-4-1



015-5-1



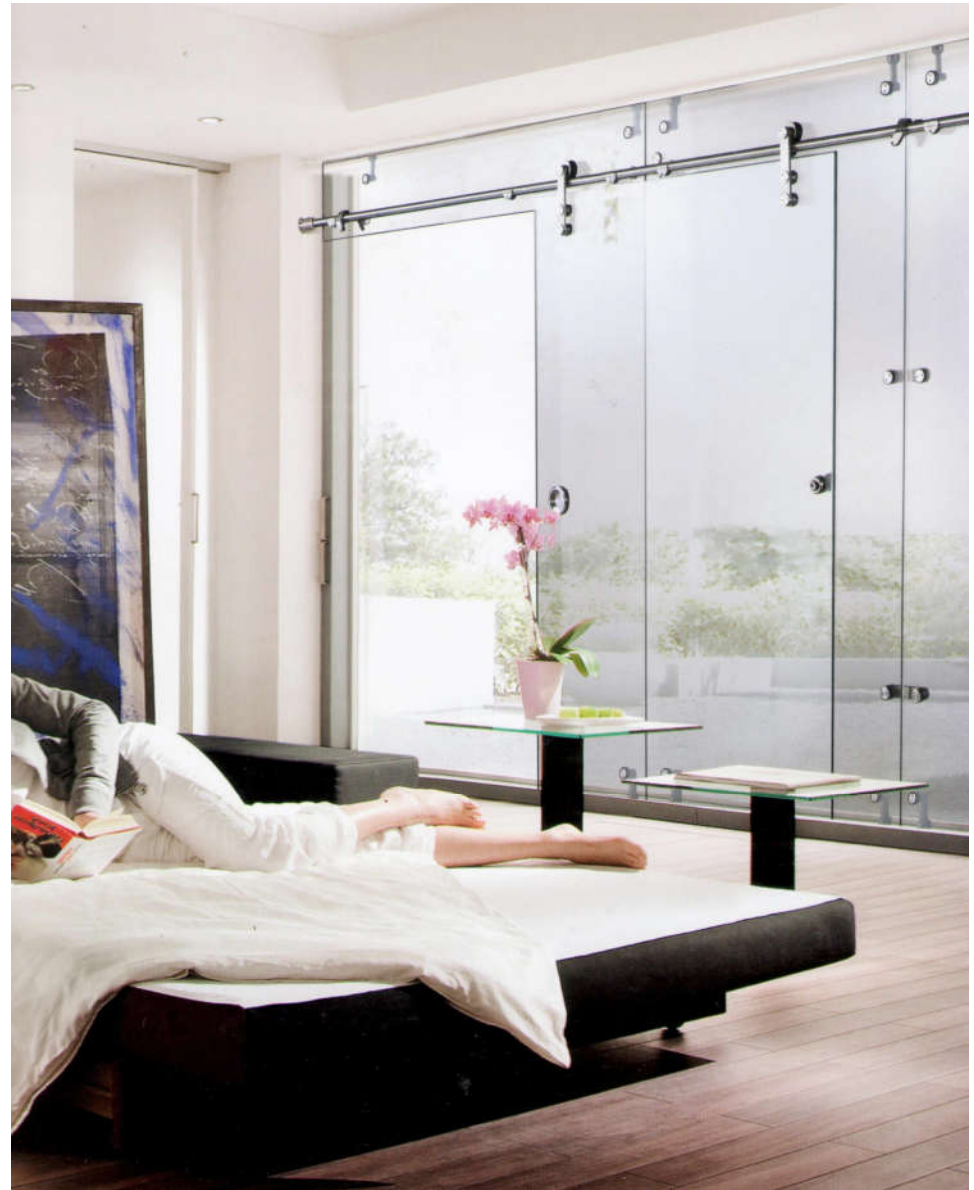
015-6-1



015-7-1



015-8-2



A017
Standard Application



017-1-2



017-2-1



017-3-7



017-4-6



017-5-1



017-6-2



015-7-2



015-8-1



015-9-1 ϕ 25



BỘ LẮP CỬA KÍNH NHÀ TẮM



DAT: -011 DAT: -012 DAT: -013 DAT: -014 DAT: -015 DAT: -016



DAT: -017 DAT: -018 DAT: -019 DAT: -020 DAT: -021 DAT: -022



DAT: -023 DAT: -024 DAT: -025 DAT: -026 DAT: -027



DAT: -028 DAT: -029 DAT: -030 DAT: -031 DAT: -032



BỘ LẮP CỬA KÍNH NHÀ TẮM

DAT: -009



DAT: -010-1-2



DAT: -010-2-1



DAT: -010-3-7



DAT: -010-4-6



DAT: -010-5-1



DAT: -010-6-2



DAT: -010-7-2



DAT: -010-8-1



DAT: -010-9-1
Size: ϕ 25





DAT: -007-1-2



DAT: -007-1-2



DAT: -007-1-2



DAT: -007-1-2



DAT: -007-1-2



DAT: -007-1-2



DAT: -007-1-2



DAT: -007-1-2

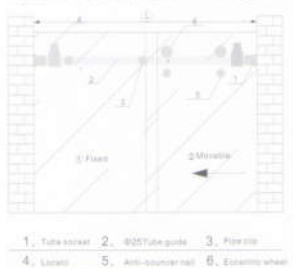
Above application is just for reference, will be changed according to the actual scene.

40X15 installation of square pipe

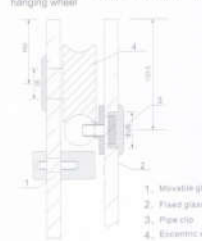
Nonstandard shower room installation diagram Instructions:

- 1) Maximum weight wearing of the shower room: 65KG
- 2) 180° maximum installation length is 1.8m; 90° dual - open door maximum installation length is 1.0m
- 3) There are no drilled holes in the guide rails ordered by users. Holes shall be made during installation.
- 4) The accessories are only suitable for clamping 8mm - 10mm glass dimensions in the installation diagram.
- 5) When drilling holes in glass, please do strictly in accordance with dimensions in the installation diagram.
- 6) Every type can install 90° dual - open, 90° single - open and 180°

Installation of 425 pipe bathroom hanging wheel



Sectional installation of 425 pipe bathroom hanging wheel



⊕ BỘ LẮP CỬA KÍNH NHÀ TẮM

DAT: -009



DAT: -009-1-2



DAT: -009-2-4



DAT: -009-3 (left)



DAT: -009-4(right)



DAT: -009-5



DAT: -009-6



DAT: -009-7



DAT: -009-8



DAT: -008



DAT: -008-1-2



DAT: -008-2-2



DAT: -008-3-2



DAT: -008-4-2



DAT: -008-5-2



DAT: -008-6-1



DAT: -008-7-1



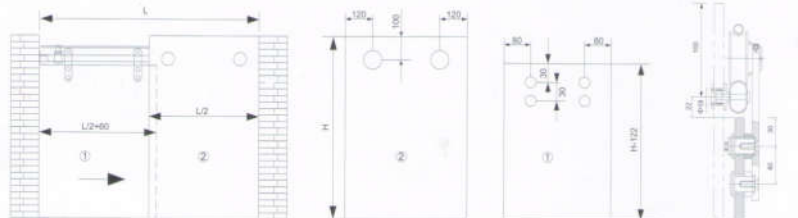
DAT: -008-8-1

Above application is just for reference, will be changed according to the actual scene.

40X15 installation of square pipe

Nonstandard shower room installation diagram Instructions:

- 1) Maximum weight wearing of the shower room: 65KG
- 2) 180° maximum installation length is 1.8m; 90° dual - open door maximum installation length is 1.0m
- 3) There are no drilled holes in the guide rails ordered by users. Holes shall be made during installation.
- 4) The accessories are only suitable for clamping 8mm - 10mm glass dimensions in the installation diagram.
- 5) When drilling holes in glass, please do strictly in accordance with dimensions in the installation diagram.
- 6) Every type can install 90° dual - open, 90° single - open and 180°



BỘ LẮP CỬA KÍNH NHÀ TẮM

DAT: -006



DAT: -006-1-2



DAT: -006-2-2



DAT: -006-3-2



DAT: -006-4-2



DAT: -006-5-2



DAT: -006-6-1



DAT: -006-7-1



DAT: -006-8-1
Size:40x15 Square tube



DAT: -004



DAT: -004-1-4



DAT: -004-2-4



DAT: -004-3-4



DAT: -004-4-2



DAT: -004-5-1



DAT: -004-6-2



DAT: -007-7-2



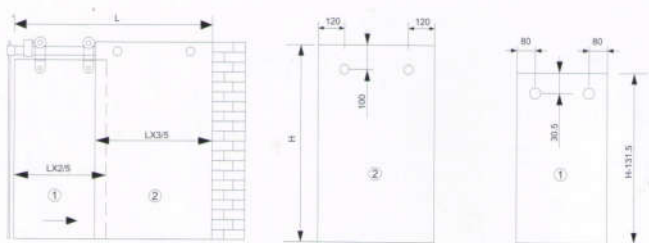
DAT: -007-8-2
Size:40x15

Above application is just for reference, will be changed according to the actual scene.

40X15 installation of square pipe

Nonstandard shower room installation diagram Instructions:

- 1) Maximum weight wearing of the shower room: 65KG
- 2) 180° maximum installation length is 1.8m; 90° dual - open door maximum installation length is 1.0m
- 3) There are no drilled holes in the guide rails ordered by users. Holes shall be made during installation.
- 4) The accessories are only suitable for clamping 8mm - 10mm glass dimensions in the installation diagram.
- 5) When drilling holes in glass, please do strictly in accordance with dimensions in the installation diagram.
- 6) Every type can install 90° dual - open, 90° single - open and 180°



DAT: -005



DAT: -005-1-2



DAT: -005-2-2



DAT: -005-3-2



DAT: -005-4-2



DAT: -005-5-2



DAT: -005-6-1



DAT: -005-7-1



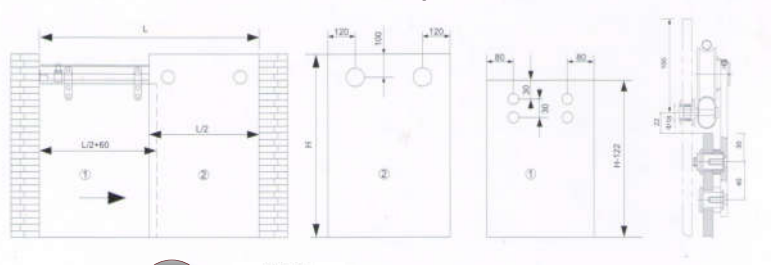
DAT: -005-8-1
Size: $\phi 8$

Above application is just for reference, will be changed according to the actual scene.

34X19 Sectional installation indication of elliptical pipe
34x19 Installation indication of elliptical pipe

Nonstandard shower room installation diagram Instructions:

- 1) Maximum weight wearing of the shower room: 65KG
- 2) 180° maximum installation length is 1.8m; 90° dual - open door maximum installation length is 1.0m
- 3) There are no drilled holes in the guide rails ordered by users. Holes shall be made during installation.
- 4) The accessories are only suitable for clamping 8mm - 10mm glass dimensions in the installation diagram.
- 5) When drilling holes in glass, please do strictly in accordance with dimensions in the installation diagram.
- 6) Every type can install 90° dual - open, 90° single - open and 180°





DAT: -004



DAT: -004-1-4



DAT: -004-2-4



DAT: -004-3-4



DAT: -004-4-2



DAT: -004-5-1



DAT: -004-6-2



DAT: -007-7-2
Size: 30x10

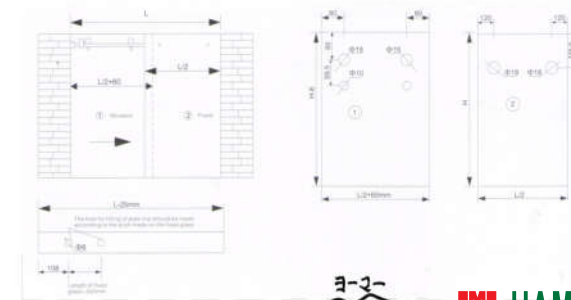


DAT: -007-8-2

Above application is just for reference, will be changed according to the actual scene. 30X10 installation of square pipe with jumping-proof pillar.

Nonstandard shower room installation diagram Instructions:

- 1) Maximum weight wearing of the shower room: 65KG
- 2) 180° maximum installation length is 1.8m; 90° dual - open door maximum installation length is 1.0m
- 3) There are no drilled holes in the guide rails ordered by users. Holes shall be made during installation.
- 4) The accessories are only suitable for clamping 8mm - 10mm glass dimensions in the installation diagram.
- 5) When drilling holes in glass, please do strictly in accordance with dimensions in the installation diagram.
- 6) Every type can install 90° dual - open, 90° single - open and 180°



DAT: -003



DAT: -003-1-2



DAT: -003-2-2



DAT: -003-3-2



DAT: -003-4-2



DAT: -003-5-1



DAT: -003-6-1



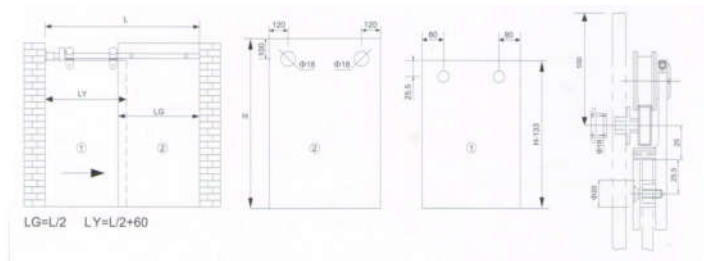
DAT: -003-7-1
Size: 30x10

Above application is just for reference, will be changed according to the actual scene.

30X10 installation of square pipe with jumping-proof pillar.

Nonstandard shower room installation diagram Instructions:

- 1) Maximum weight wearing of the shower room: 65KG
- 2) 180° maximum installation length is 1.8m; 90° dual - open door maximum installation length is 1.0m
- 3) There are no drilled holes in the guide rails ordered by users. Holes shall be made during installation.
- 4) The accessories are only suitable for clamping 8mm - 10mm glass dimensions in the installation diagram.
- 5) When drilling holes in glass, please do strictly in accordance with dimensions in the installation diagram.
- 6) Every type can install 90° dual - open, 90° single - open and 180°





DAT: -001



DAT: -001-1-4



DAT: -001-2-4



DAT: -001-3-4



DAT: -001-4-2



DAT: -001-5-4



DAT: -001-6-2



DAT: -001-7-2



DAT: -001-8-2
Size: 30x 10 square tube



DAT: -001-9-2
Size: sold

Above application is just for reference, will be changed according to the actual scene. 30X10 installation of square pipe with jumping-proof pillar.

Nonstandard shower room installation diagram Instructions:

- 1) Maximum weight wearing of the shower room: 65KG
- 2) 180° maximum installation length is 1.8m; 90° dual - open door maximum installation length is 1.0m
- 3) There are no drilled holes in the guide rails ordered by users. Holes shall be made during installation.
- 4) The accessories are only suitable for clamping 8mm - 10mm glass dimensions in the installation diagram.
- 5) When drilling holes in glass, please do strictly in accordance with dimensions in the installation diagram.
- 6) Every type can install 90° dual - open, 90° single - open and 180°

